

## City Navigator Europe NT 2008 Retail Map Update

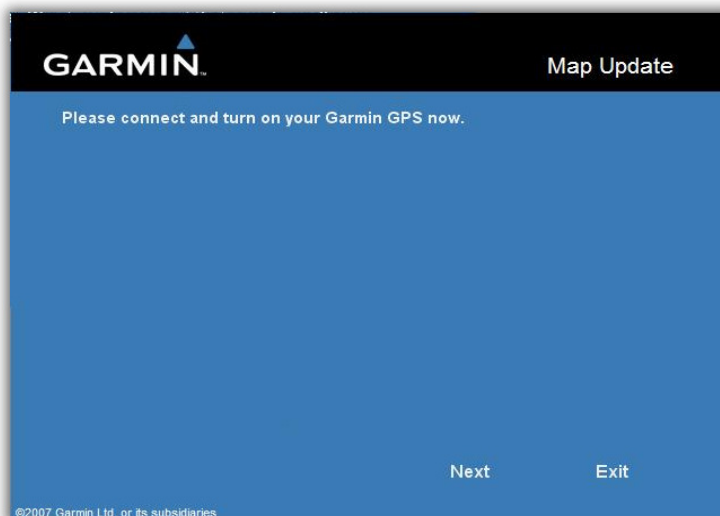
### Update your Garmin European sat-nav or upgrade your regional device to become a continental navigator.

City Navigator NT 2008 Map Updates are Windows 2000 or newer (XP, Vista) and Mac compatible. This means you can update the maps on your preloaded sat-nav straight from your computer.

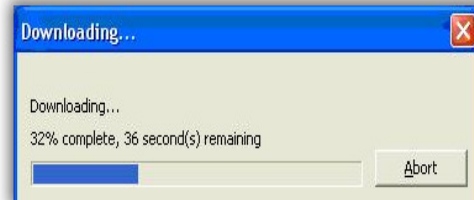
1. Insert the Retail Map Update DVD into your computer to run the Map Update program. You will see this welcome screen:



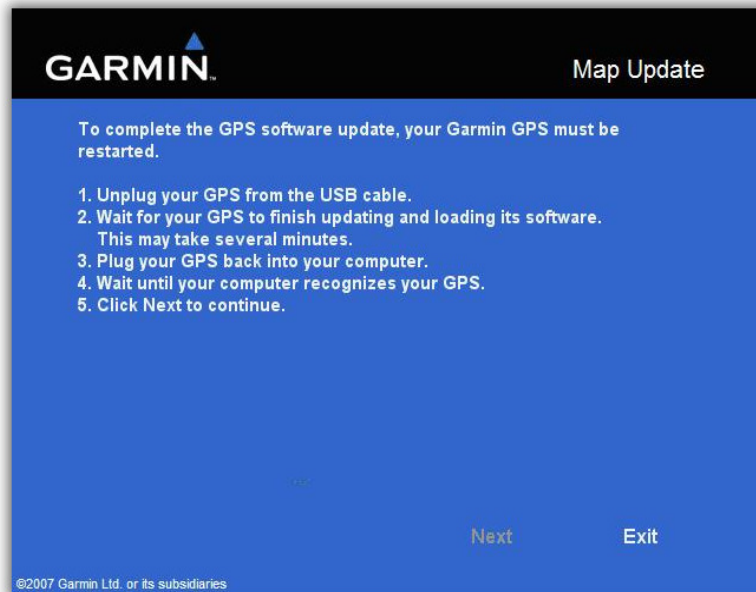
2. Connect your Garmin device to your computer and select 'Next'. Please note it may take your computer a few minutes to recognise your device.



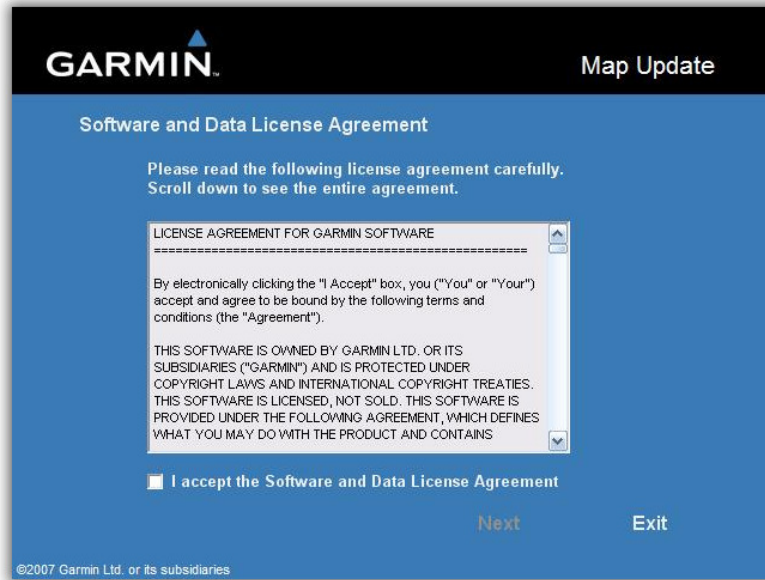
- An Internet connection is required to ensure your Garmin sat-nav is updated with the latest software, if applicable:



- Disconnect your sat-nav from the computer to finish updating the software. Once complete, reconnect your sat-nav. Once it is recognised, select 'Next' to proceed:



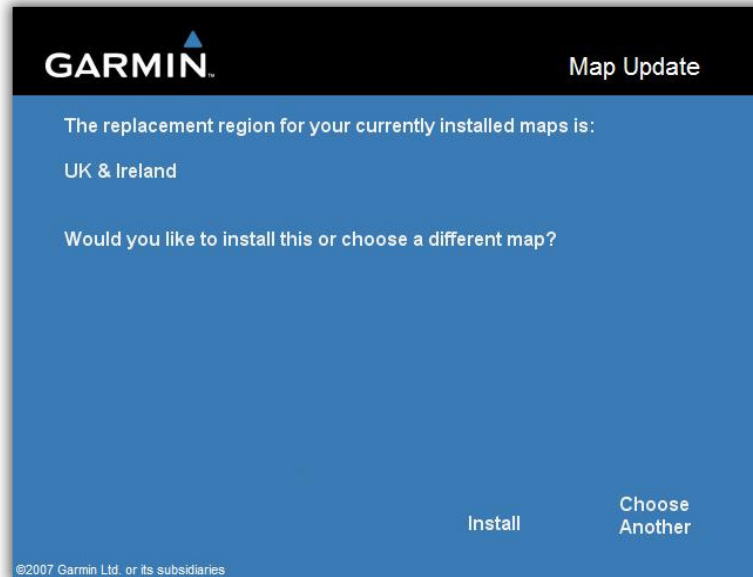
5. Read and accept the Software and Data License Agreement and click 'Next' to continue:



6. Enter the Product Key as it appears on the back of your Map Update Disc and select 'Install':



7. Next, select the region to update. Additional mapping can be loaded from the MapInstall programme later. Then click 'Install'.



8. The Map Updater connects to the Garmin server to verify the update before building the new maps for your sat-nav:



9. Once built, the map update is installed on your sat-nav:



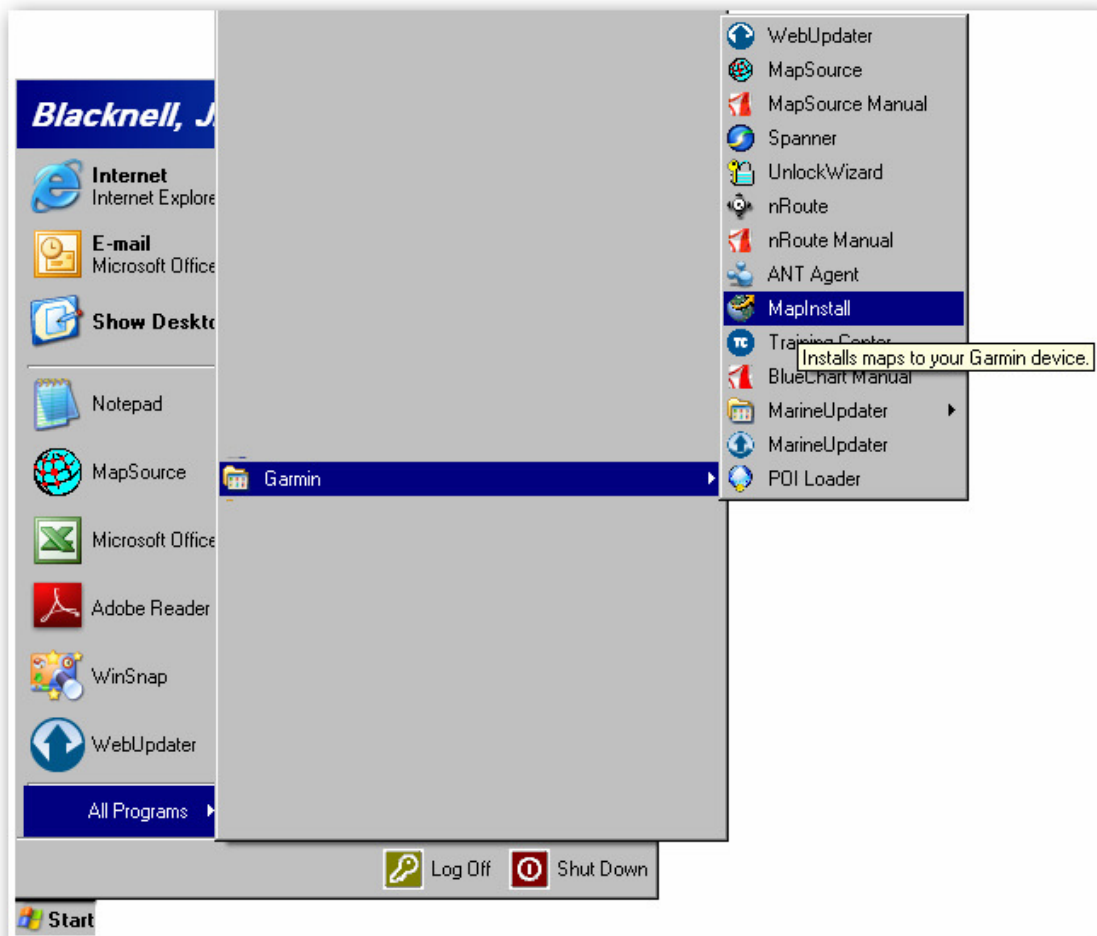
10. You will receive this message to confirm your successful map update.



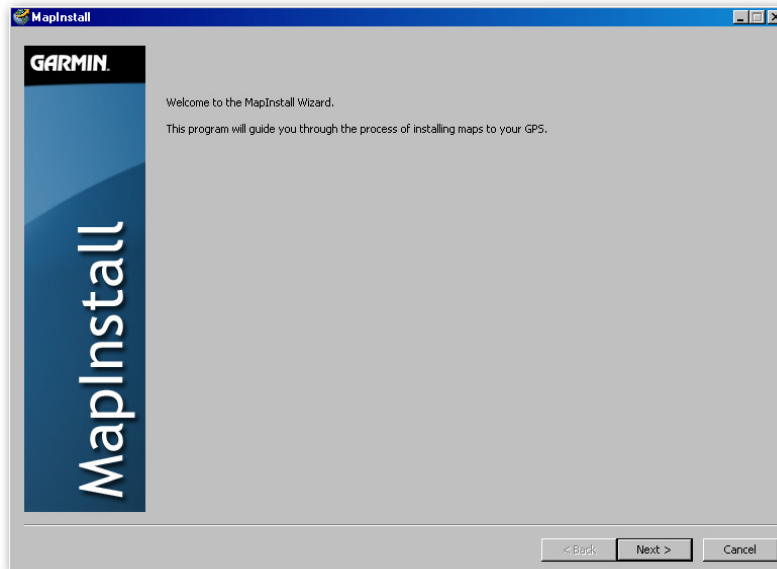
11. Now you've updated a single region, you may wish to download additional European maps to your spare internal memory or to an additional SD card inserted in your unit. You can do this using the MapInstall programme, which was loaded onto your computer by the Update DVD. First, select 'Start' on the bottom toolbar of your PC:



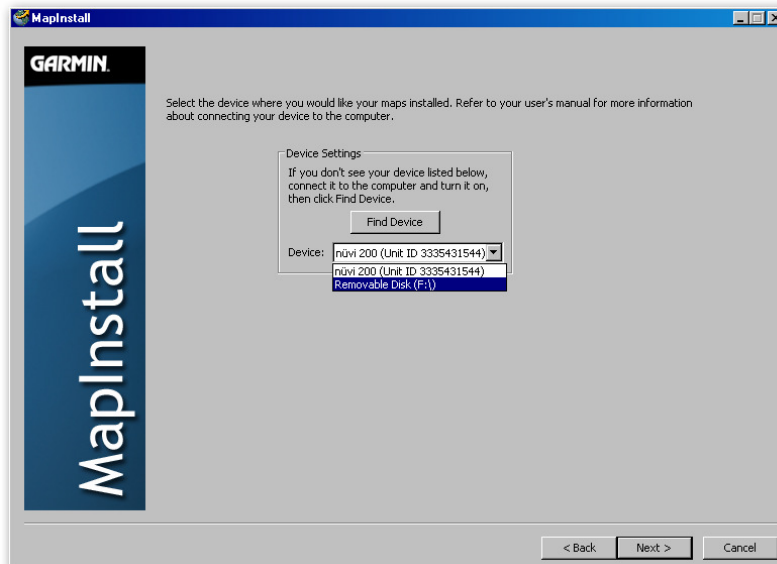
12. Select 'All Programs' to view a list of your installed programs. Choose 'Garmin', then 'MapInstall'. Mac users should select the MapSend programme:



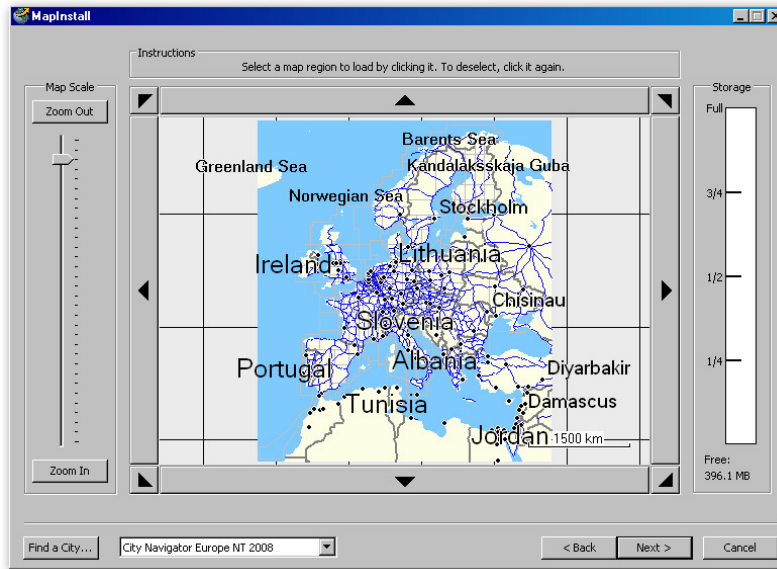
13. The MapInstall Wizard will launch. Choose 'Next' to continue:



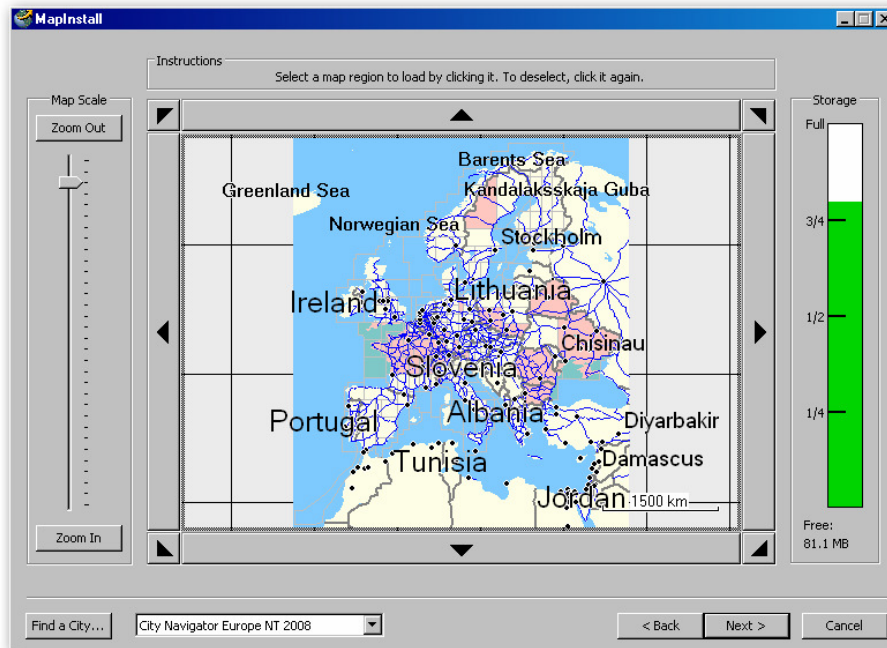
14. You can transfer additional mapping either to your sat-nav's remaining internal memory, or to an additional SD card (up to 4GB). Select the device to receive the mapping from the drop-down menu and click 'Next':



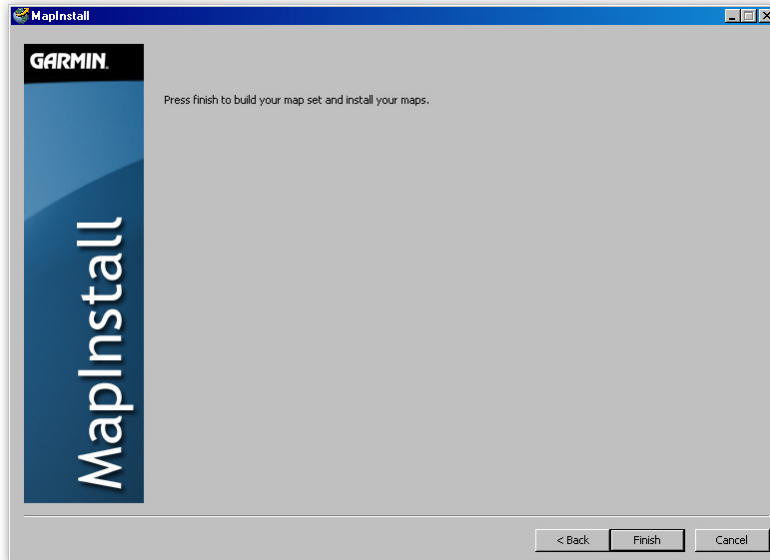
15. You will see a map of Europe broken down into individual tiles:



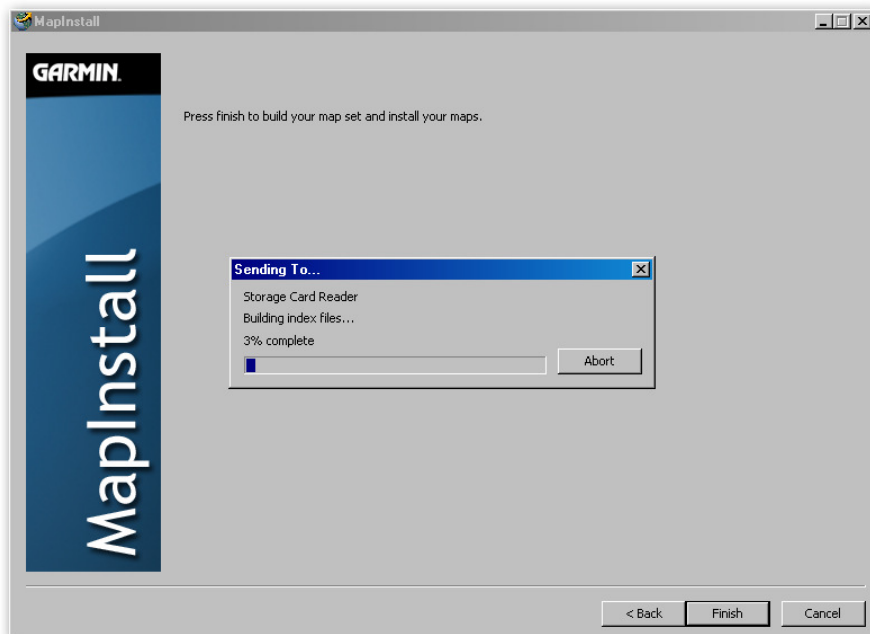
16. Right-click each tile you wish to download and it turns pink to indicate your selection. The storage bar on the right-hand side indicates the amount of storage space remaining:



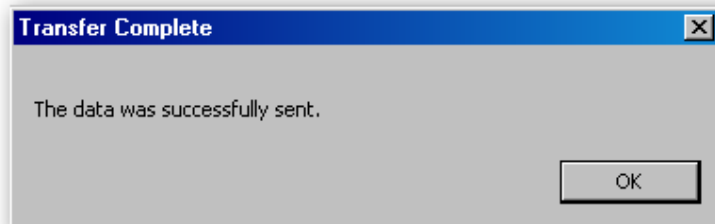
17. Click 'Next' once you have made your mapping selection:



18. Select 'Finish' and the mapping will start to transfer to your unit. The time this will take will vary according to the volume of mapping selected:



19. Once the data transfer is complete, you will receive this notification:



20. Select 'OK', disconnect your sat-nav or SD card from your computer and the transferred mapping is ready to access from your Garmin unit. This process can be repeated as many times as you wish. To transfer the whole of Europe in one, a minimum 2GB SD card is required.